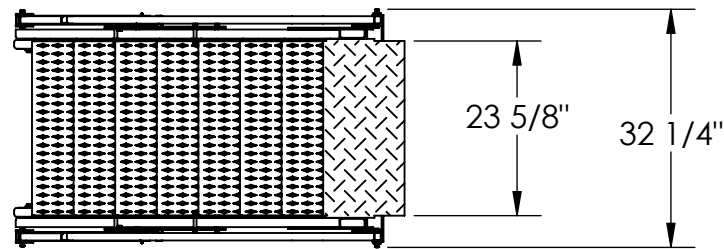


FOLDING MEZZANINE LADDER, LAD-FM-72

APPROX WEIGHT: 275.63 lbs.
DOES NOT INCLUDE WEIGHT OF POWER OR PACKAGING!!!

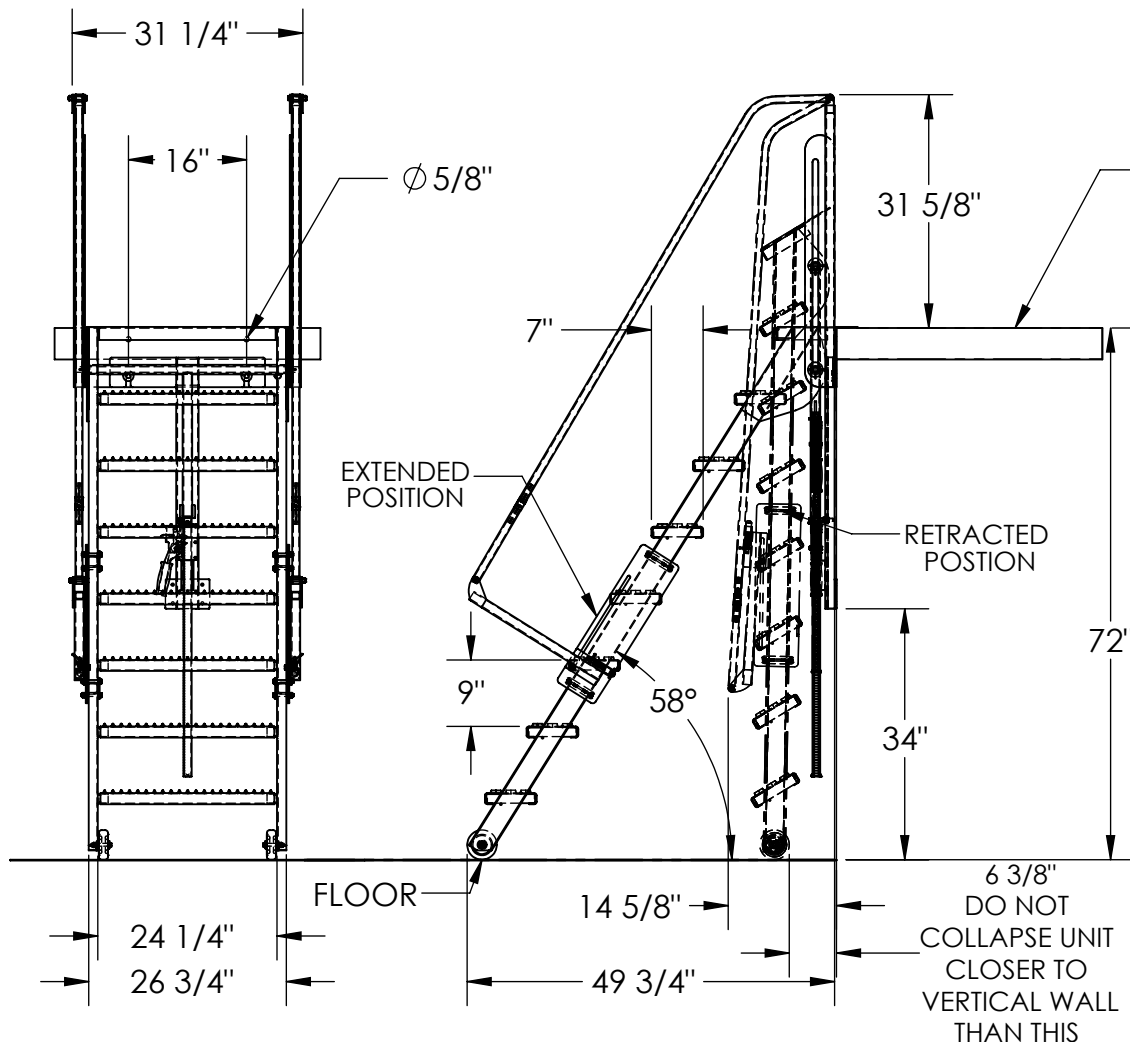
*** ANY ADDITIONS, DELETIONS, OR OMISSIONS MUST BE CORRECTED ON THIS DRAWING AS THIS DRAWING WILL BE CONSIDERED ALL INCLUSIVE ***

ALL GRAPHICS PROVIDED ARE FOR REFERENCE ONLY. IF CERTAIN DIMENSIONS ARE CRITICAL PLEASE VERIFY THOSE DIMENSIONS WITH YOUR SALESPERSON



STANDARD FEATURES

- MODEL NUMBER: LAD-FM-72
- OVERALL WIDTH: 32 1/4"
- USABLE STEP WIDTH: 24 1/4"
- HANDRAIL HEIGHT: 31 5/8"
- STEP MATERIAL: SERRATED STEEL
- STEP DEPTH: 7"
- MAX CAPACITY: 350 LBS.
- MEZZANINE HEIGHT: 72"
(MEZZANINE HEIGHT TOLERANCE: ± 1/2")
- STEP HEIGHT SPACING: 9"
- EXTENDED LENGTH: 49 3/4"
- COLLAPSED LENGTH: 14 5/8" (APPROX.)
- TOUGH BAKED IN POWDER
COATED BLUE AND YELLOW FINISH



MEZZANINE SHOWN FOR REFERENCE ONLY - NOT INCLUDED

SPECIAL FEATURES

NONE

IT IS THE CUSTOMER'S RESPONSIBILITY TO MAKE SURE THAT THIS UNIT COMPLIES WITH ALL LOCAL SAFETY LAWS, CODES AND REGULATIONS

DIMENSION TOLERANCE ± 1/4"

APPROVAL

I, THE UNDERSIGNED, AGREE THAT THE PRODUCT AS REPRESENTED SATISFIES DESIGN AND DIMENSION REQUIREMENTS. I ALSO ACKNOWLEDGE MY DUTY TO CONFIRM PRODUCT AND INSTALLATION COMPLIANCE WITH ALL APPLICABLE FEDERAL, STATE AND LOCAL REGULATIONS AND STANDARDS.

UNITS REQUIRING APPROVAL DRAWINGS OR MODIFIED ARE NON-RETURNABLE

[] As drawn [] As marked

Signed: _____ Date: _____

Printed Name: _____

LEAD TIME WILL START UPON RECEIPT OF SIGNED APPROVAL DRAWING

DISTRIBUTOR'S NAME:		P.O.#
VESTIL MANUFACTURING		X
DRAWN BY: KGH		W.O.#
DATE: 11/29/2017		X
REFERENCE: X	SCALE: 1:26	SALES: X
QUOTED LEAD TIME: X	QUOTE # X	FILE NAME:
		44-007-676